



white frame stitch decor and full range of trims. For a strong effect, Fire can be matched with StonePeak new original decor Octagon, a unique mosaic made with the two Touch colors Ink and Snow.

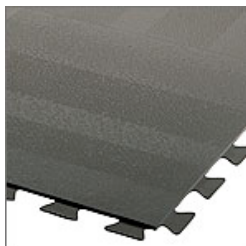
FASTPath to this product... [Click Here](#)



Looks like Marble

New laminate tile designs from **Formica Flooring** offers a completely fresh approach to laminates. The Bellezza line of natural stone and marble designs (pictured) are enhanced with recessed grout lines for a more authentic appearance. They're also available in a highly polished mirror finish. The stone/marble laminate comes in four options: Labrador Lavik, Botticino Classic Dark, Botticino Classic Light and Carrara Marmor. The laminates is 8 mm thick and comes with a 25-year warranty.

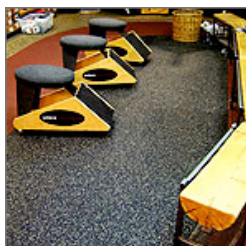
FASTPath to this product... [Click Here](#)



Gridlock

Fastlane, a new surface texture from **Johnsonite**, is part of its Underlock rubber tile program, and offers the modularity of carpet tile, the installation of ease of Underlock and the longevity of rubber. Fastlane uses utilizes various shaped parallel lines to symbolize a city freeway. Linear, hatched or checkered designs can be created in 74 solid colors. The material requires no adhesives and fit together simply.

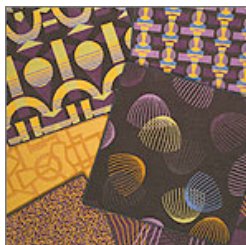
FASTPath to this product... [Click Here](#)



Rockin' Rubber

Commercial rubber flooring from **Dinoflex's** Evolution collection is suitable for schools, offices and retail outlets, among other applications. Create a unique blend for your project's flooring by mixing and matching from the extensive color palette or choose among 24 established patterns.

FASTPath to this product... [Click Here](#)

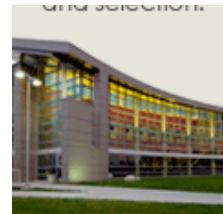


Remix for the Environment

The Remix Collection by **Shaw Hospital Group** and designed by Kate Korten comes to life with animated patterns and linear motifs found in advertising and art designs of the 1950s and 1960s. For coordinated guest rooms and public spaces, the carpet is available in both print and tufted patterns. Manufactured with Shaw Industries' Eco Solution Q nylon and tufted at a facility powered by yellow grease biodiesel fuel, the carpet contains a minimum of 25% recycled content and is cradle-to-cradle certified using a nationwide reclamation network.

FASTPath to this product... [Click Here](#)

Sponsored Item:



Get this delivered to your Inbox
[Subscribe](#) to the *ProductWire* Newsletter

Archive:

- [ProductWire Archives](#)

Quick Links:

- [Home](#)
- [Editorial Submissions](#)
- [Sponsor ProductWire](#)
- [Contact us](#)